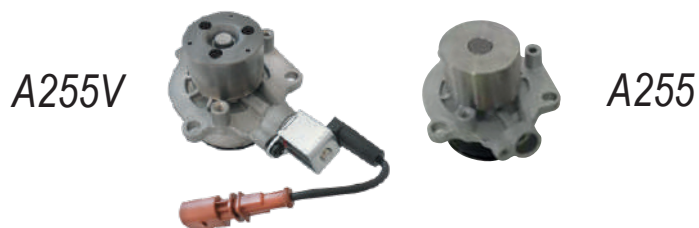


A255V (Variable version)
A255 (IAM Mechanical version)

Audi/Seat/Skoda/Volkswagen

OE numbers: 04L121011 / 04L121011E / 04L121011EX / 04L121011L



Dolz offers two versions of the A255 water pump on the market. The mechanical version A255, with IAM design in its internal bearing. And the variable version A255V.

**DIFFERENCES
ABOUT
DESIGN**

1.

A255V



A255

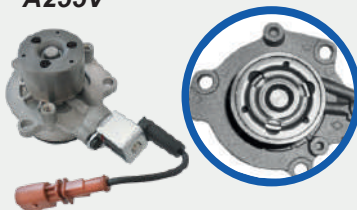


A255V has a ring around the impeller, which receives the order from the vehicle's control unit to go up or down, allowing the impeller to run or not the coolant. The mechanical version A255 hasn't this ring.

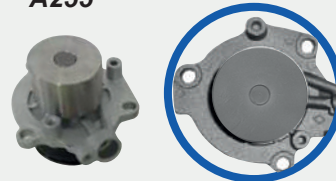
**DIFFERENCES
ABOUT
DESIGN**

2.

A255V



A255



A255V has an **external bearing**. The mechanical version A255 has a different design incorporating an **internal bearing** (IAM design).

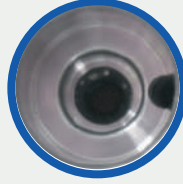


**DIFFERENCES
ABOUT
DESIGN**

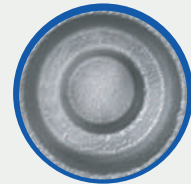
3.



A255V



A255



The variable version A255V has a hole into the specific housing of the switch. A255 version hasn't this hole.

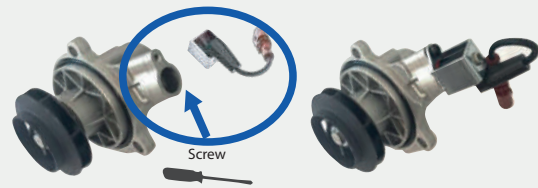
ASSEMBLY INSTRUCTIONS

**A255
ASSEMBLY**



Unscrew

A255V Variable version



Screw

A255 Mechanical version

Unscrew the electric switch of the original water pump (OE) and screw it into the specific housing as shown in the images